

3rd Floor, 20-22 Mortimer Street

Fitzrovia

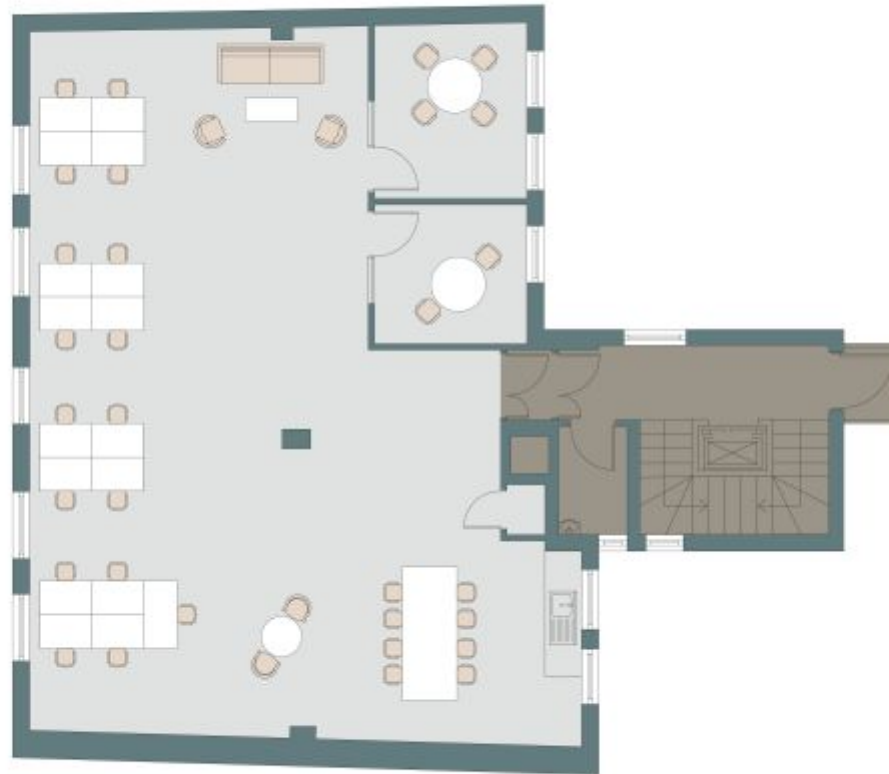
Sq Ft: 1260

Monthly Price: £19,650





Floor Plan



About This Workspace

The 3rd floor at 20–22 Mortimer Street offers 1,260 sq ft of newly refurbished Fitzrovia workspace within a prominent HQ building. The floor will be fitted to a high standard with engineered timber flooring, comfort cooling, excellent natural light and good ceiling heights. Occupiers will benefit from a concierge reception, passenger lift, two entrances and access to a communal roof terrace, all in a prime Mortimer Street location close to Tottenham Court Road, Gough Street and Oxford Circus stations.

Workspace Amenities



Access Control



Air Conditioning



Excellent Natural Light



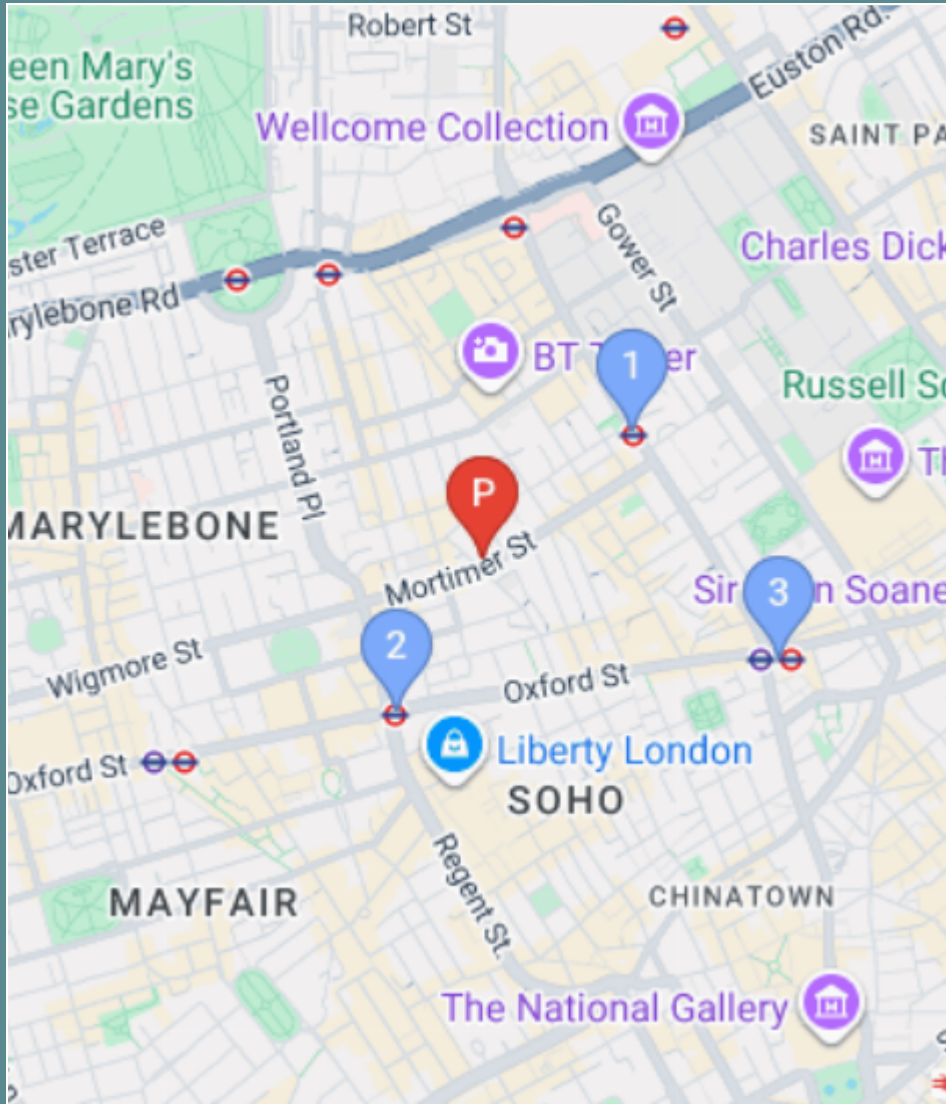
Lift

Workspace Specification

Floor/Unit	Status	Size	Price	Term
3rd Floor	Available	1260	£19,650	24 months

Connectivity

The 3rd floor at 20–22 Mortimer Street offers 1,260 sq ft of newly refurbished Fitzrovia workspace within a prominent HQ building. The floor will be fitted to a high standard with engineered timber flooring, comfort cooling, excellent natural light a...



 Goodge Street – 7 mins walk



 Oxford Circus – 7 mins walk



 Tottenham Court Road – 12 mins walk



Workspace Services

Included in your sub800 workspace



Remote Concierge Service

Our remote concierge team is on hand to support you. From sourcing catering for important meeting, to planning wellness workshops, and everything in between...



Food & Beverage Deliveries

Enjoy a tailored choice of food and beverages delivered to your office. Our selections are carefully curated by our team to offer your business delightful options.



Internet & Technology

Select from a variety of internet bandwidth options, along with access to other technology products to upgrade your space



Cleaning & Waste Services

Access to allocated cleaning slots, reporting and products to suit your team's needs. Our cleaning saves you time arranging cleaning or doing it yourself.



Furniture & Fit-Out

Browse on the sub800 shop for our extensive range of furniture items, meeting room installations, have a bespoke consultation with our team.



Health & Safety Onboarding

A comprehensive health and safety onboarding pack that details how you can ensure your workspace is safe, as well as a list of preferred suppliers and rates



Repairs & Support

sub800 provide your business with light repairs and the option to source specialist works with preferred suppliers and rates



Member's Club Access

Access to exclusive member's clubs for the C-Suite level of your team, giving them access to external meeting space, events and networking opportunities





[Make An Enquiry](#)

[Book A Viewing](#)

enquiries@sub800.com | [0207 052 3025](tel:02070523025) | www.sub800.com