

# 1st Floor, 365 Euston Road

Fitzrovia

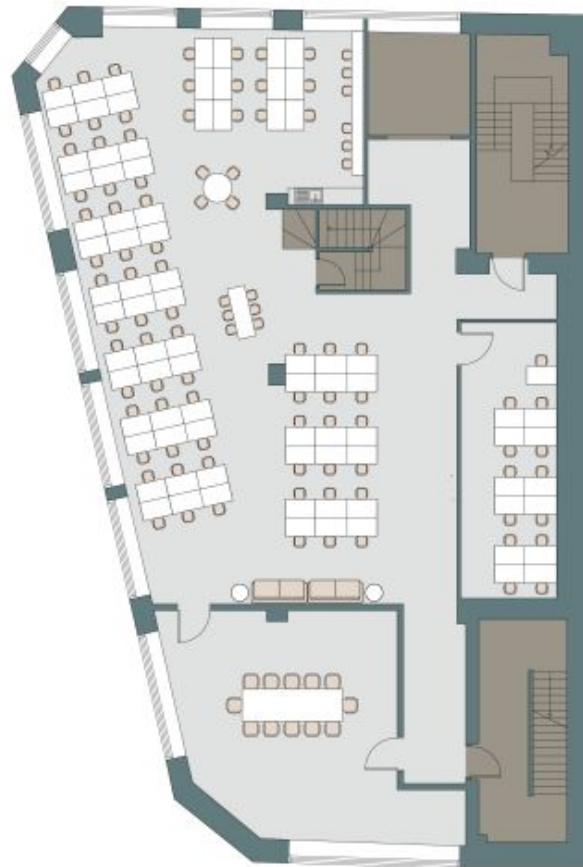
Sq Ft: 3250

Monthly Price: £24,400





# Floor Plan



# About This Workspace

Situated in the bustling heart of Euston, 365 Euston Road offers a contemporary and well-connected workspace designed for modern businesses. This recently refurbished building features sleek, high-quality finishes, excellent natural light, and a flexible layout to support productivity and collaboration. With Euston, Warren Street, and Great Portland Street stations just a short walk away, the location provides exceptional transport links alongside a vibrant mix of cafés, restaurants, and amenities. A prime address for businesses looking for both convenience and a dynamic working environment.

# Workspace Amenities



Excellent Natural Light



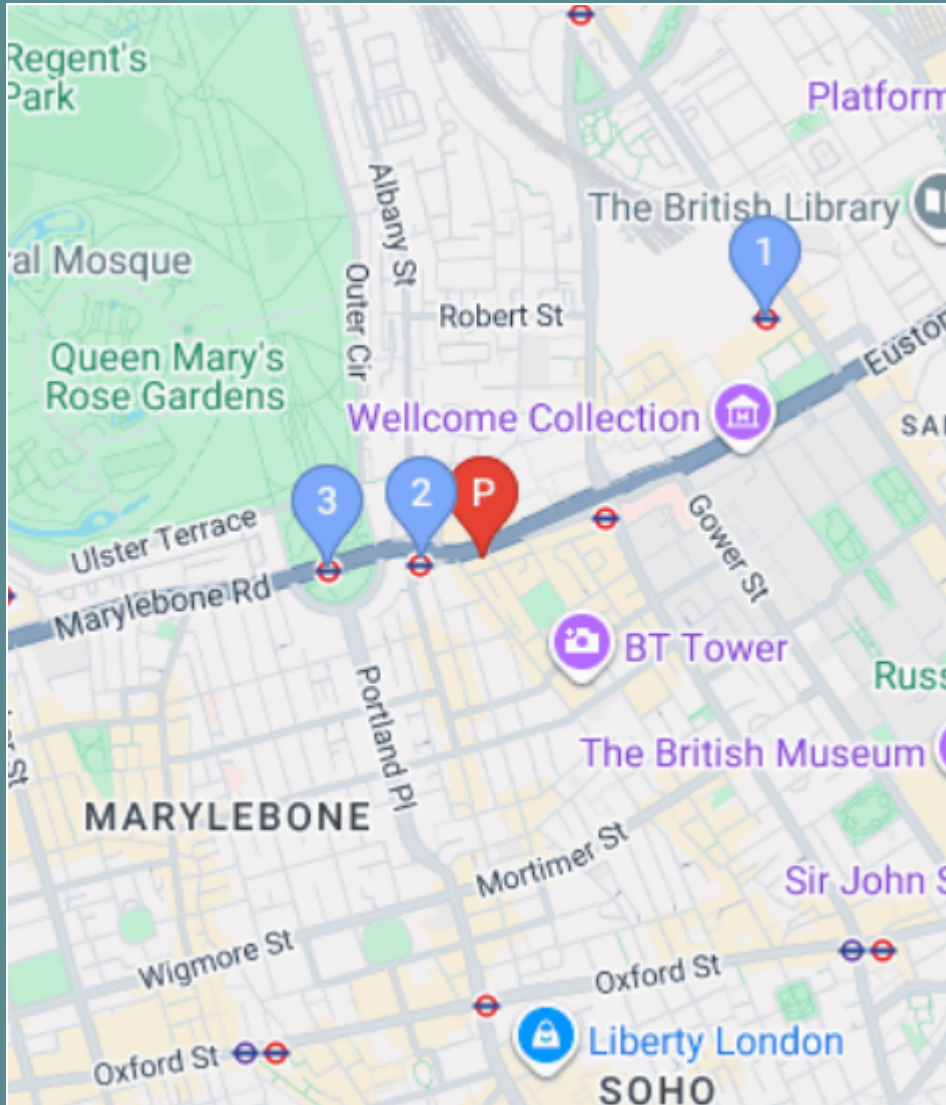
Meeting Rooms

# Workspace Specification

Floor/Unit	Status	Size	Price	Term
1st Floor	Available	3250	£24,400	24 months

# Connectivity

Situated in the bustling heart of Euston, 365 Euston Road offers a contemporary and well-connected workspace designed for modern businesses. This recently refurbished building features sleek, high-quality finishes, excellent natural light, and a flex...




 Great Portland Street – 2 mins walk



 Regent's Park – 6 mins walk



 Euston – 15 mins walk



# Workspace Services

Included in your sub800 workspace



## Remote Concierge Service

Our remote concierge team is on hand to support you. From sourcing catering for important meeting, to planning wellness workshops, and everything in between...



## Food & Beverage Deliveries

Enjoy a tailored choice of food and beverages delivered to your office. Our selections are carefully curated by our team to offer your business delightful options.



## Internet & Technology

Select from a variety of internet bandwidth options, along with access to other technology products to upgrade your space



## Cleaning & Waste Services

Access to allocated cleaning slots, reporting and products to suit your team's needs. Our cleaning saves you time arranging cleaning or doing it yourself.



## Furniture & Fit-Out

Browse on the sub800 shop for our extensive range of furniture items, meeting room installations, have a bespoke consultation with our team.



## Health & Safety Onboarding

A comprehensive health and safety onboarding pack that details how you can ensure your workspace is safe, as well as a list of preferred suppliers and rates



## Repairs & Support

sub800 provide your business with light repairs and the option to source specialist works with preferred suppliers and rates



## Member's Club Access

Access to exclusive member's clubs for the C-Suite level of your team, giving them access to external meeting space, events and networking opportunities





[Make An Enquiry](#)

[Book A Viewing](#)

[enquiries@sub800.com](mailto:enquiries@sub800.com) | [0207 052 3025](tel:02070523025) | [www.sub800.com](http://www.sub800.com)