

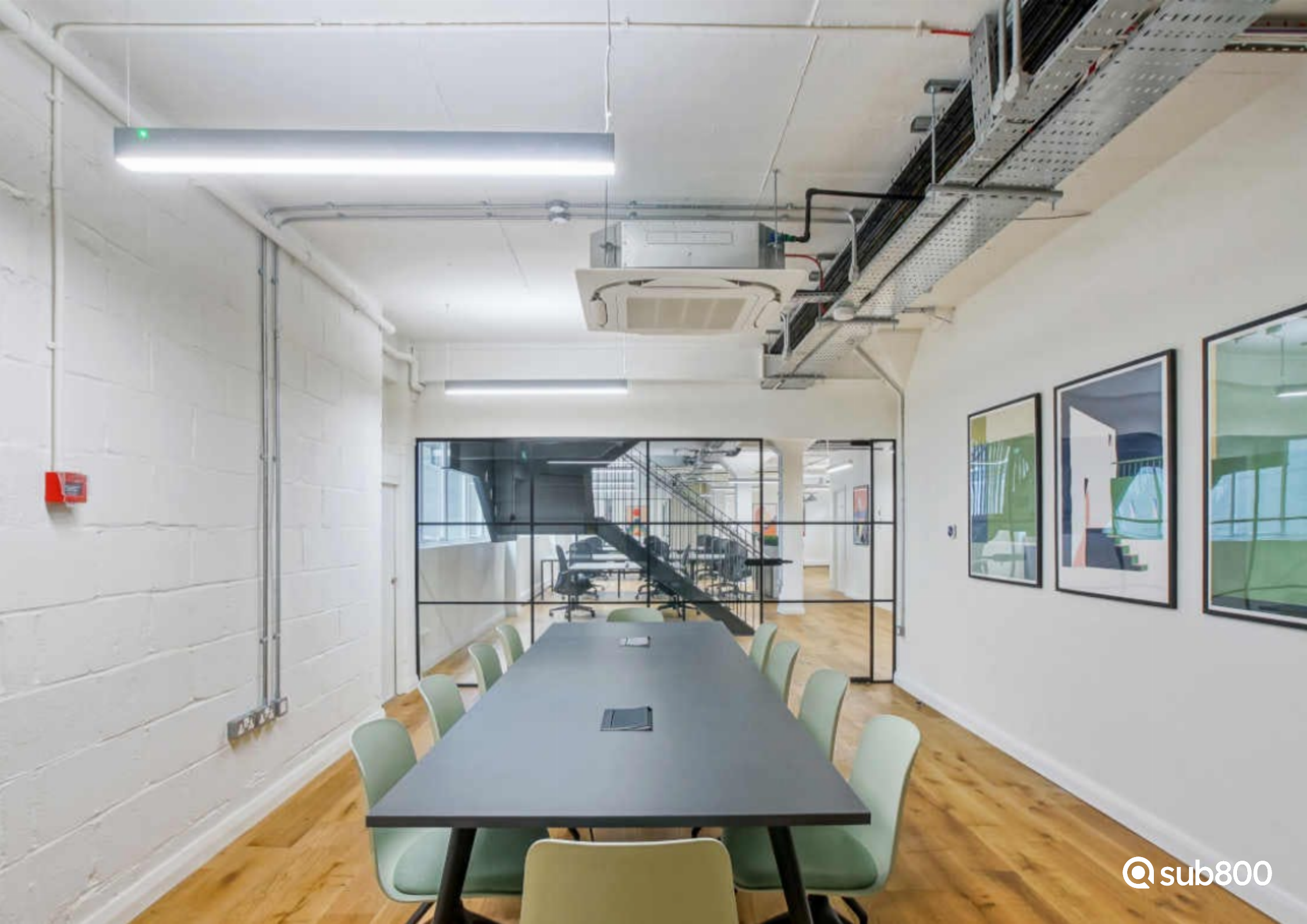
# 2nd Floor, 47 Brunswick Place

Shoreditch

Sq Ft: 3450

Monthly Price: £26,650





# About This Workspace

Positioned in the heart of Shoreditch, Jordan House offers 3,413 sq ft of newly refurbished, fully fitted workspace across interconnected floors. Featuring excellent natural light, stylish interiors and plug-and-play functionality, the space includes meeting rooms, breakout areas and modern amenities. Located moments from Old Street and Hoxton Square, the building is surrounded by vibrant cafés, restaurants and leading tech occupiers, providing an inspiring environment with exceptional transport connectivity and a dynamic creative neighbourhood.

# Workspace Amenities



Air Conditioning



Cycle Storage



Lift



Meeting Rooms



Shower



Partially Furnished



Phone Booth

# Workspace Specification

Floor/Unit	Status	Size	Price	Term
2nd Floor	Available	3450	£26,650	24 months

# Connectivity

Positioned in the heart of Shoreditch, Jordan House offers 3,413 sq ft of newly refurbished, fully fitted workspace across interconnected floors. Featuring excellent natural light, stylish interiors and plug-and-play functionality, the space includes...



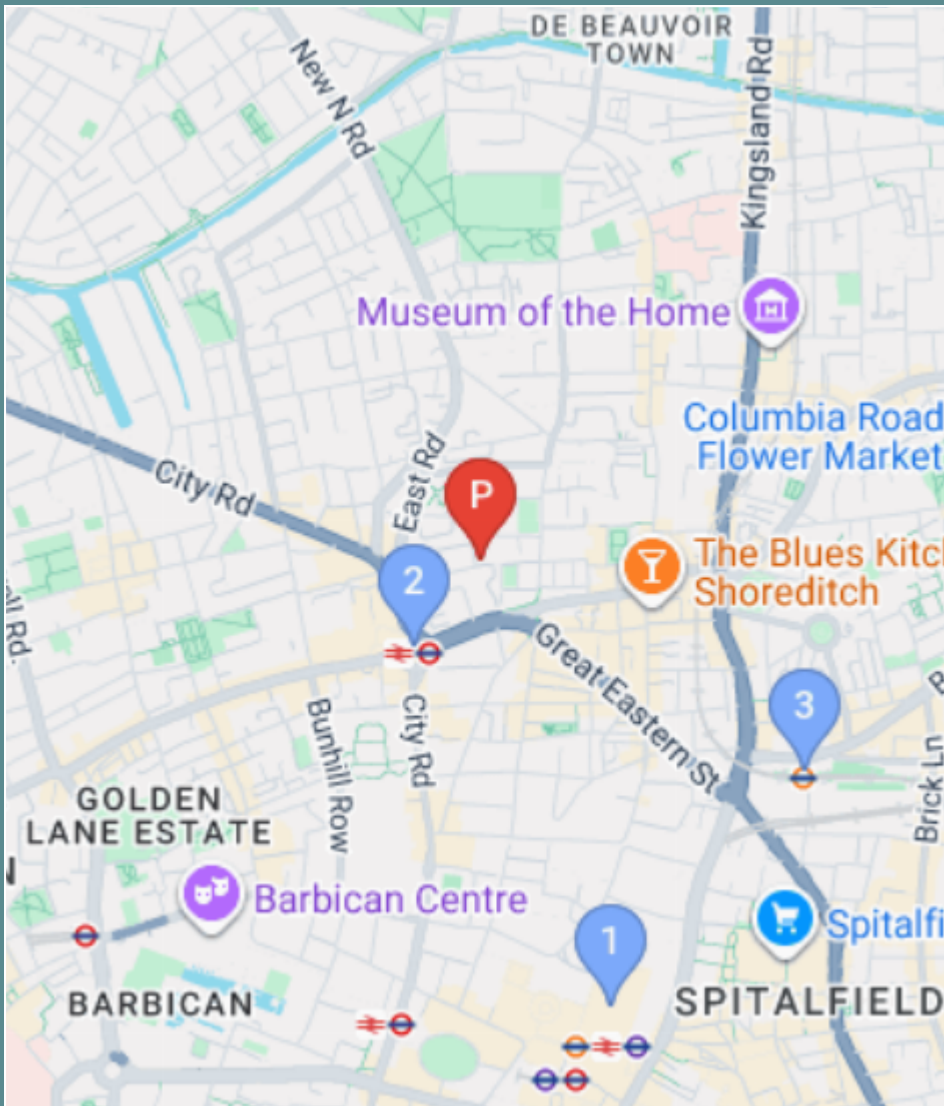
Old Street – 4 mins walk



Shoreditch High Street – 15 mins walk



Liverpool Street – 18 mins walk



# Workspace Services

Included in your sub800 workspace



## Remote Concierge Service

Our remote concierge team is on hand to support you. From sourcing catering for important meeting, to planning wellness workshops, and everything in between...



## Food & Beverage Deliveries

Enjoy a tailored choice of food and beverages delivered to your office. Our selections are carefully curated by our team to offer your business delightful options.



## Internet & Technology

Select from a variety of internet bandwidth options, along with access to other technology products to upgrade your space



## Cleaning & Waste Services

Access to allocated cleaning slots, reporting and products to suit your team's needs. Our cleaning saves you time arranging cleaning or doing it yourself.



## Furniture & Fit-Out

Browse on the sub800 shop for our extensive range of furniture items, meeting room installations, have a bespoke consultation with our team.



## Health & Safety Onboarding

A comprehensive health and safety onboarding pack that details how you can ensure your workspace is safe, as well as a list of preferred suppliers and rates



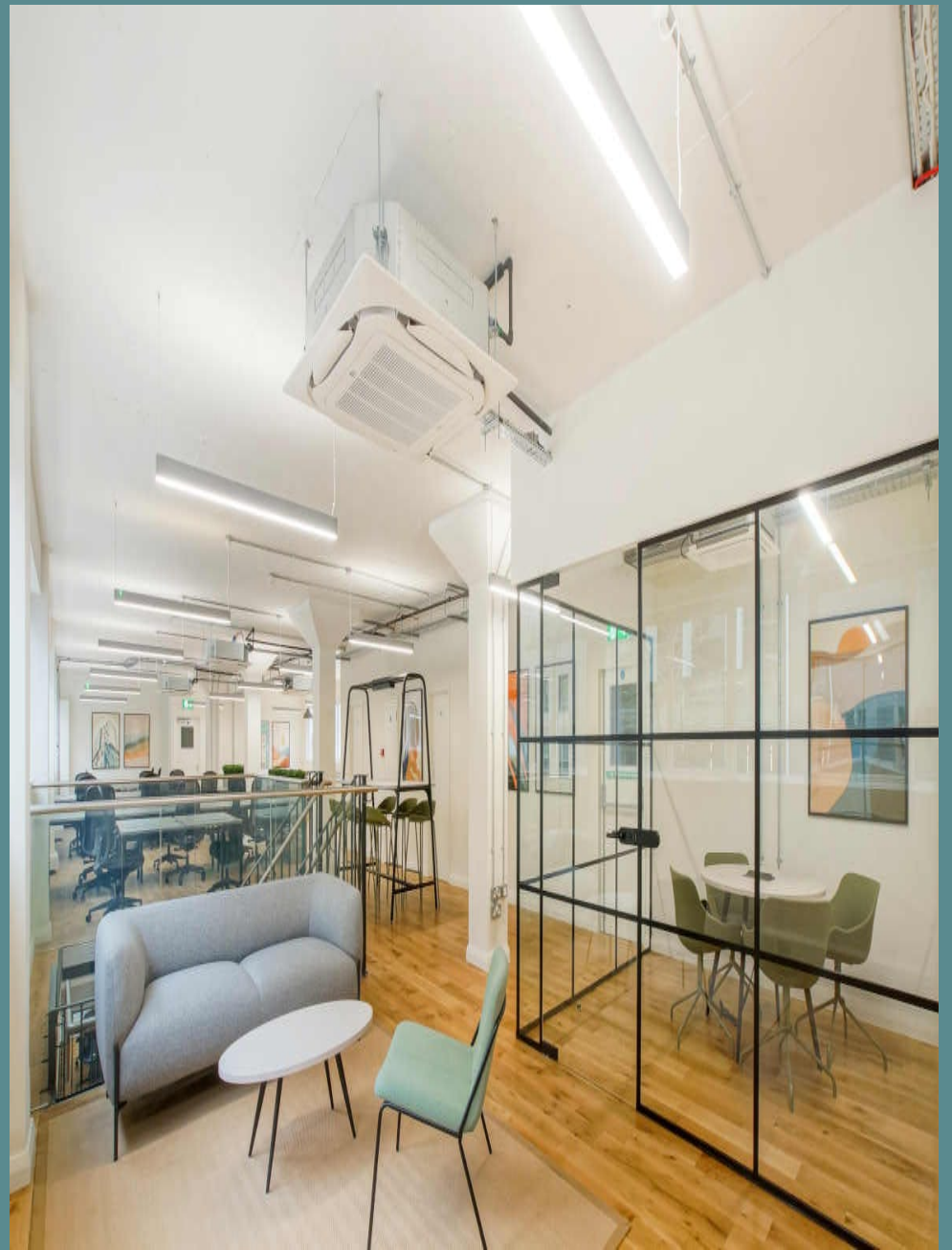
## Repairs & Support

sub800 provide your business with light repairs and the option to source specialist works with preferred suppliers and rates



## Member's Club Access

Access to exclusive member's clubs for the C-Suite level of your team, giving them access to external meeting space, events and networking opportunities





[Make An Enquiry](#)

[Book A Viewing](#)

[enquiries@sub800.com](mailto:enquiries@sub800.com) | [0207 052 3025](tel:02070523025) | [www.sub800.com](http://www.sub800.com)