

# 3rd Floor, 16 Mortimer Street

Fitzrovia

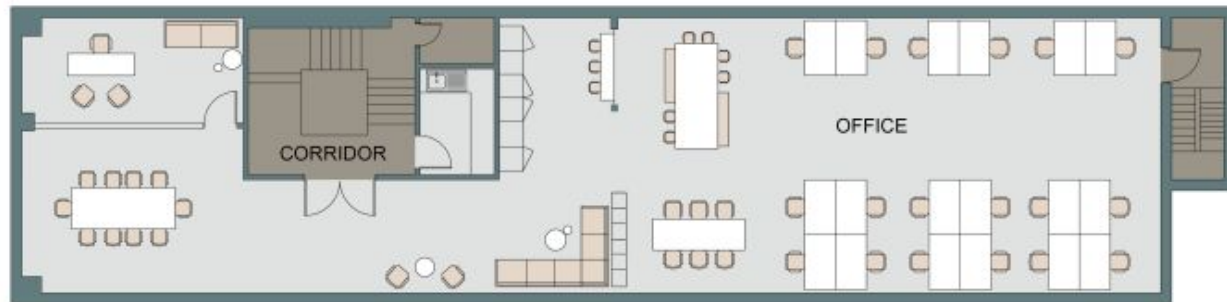
Sq Ft: 1861

Monthly Price: £33,200





# Floor Plan



# About This Workspace

16 Mortimer Street is a 10,100 sq ft luxury boutique office building offered as a whole or in floors from 1,843 sq ft. It features Grade A+ fitted space, duplex options, a boutique reception with a barista-trained concierge, brand-new air conditioning, high-spec CCTV, secure fob access and stylish crittal windows with a lift. Occupiers benefit from a secure bike store, extensive showers and changing rooms, and premium landlord-designed finishes including exposed brickwork, LED lighting, clay pot ceilings, solid wood flooring and Scandinavian panelling, all supported by full-time concierge service.

# Workspace Amenities



Access Control



Air Conditioning



Cycle Storage



Lift



Shower



Outdoor Space



Manned Reception



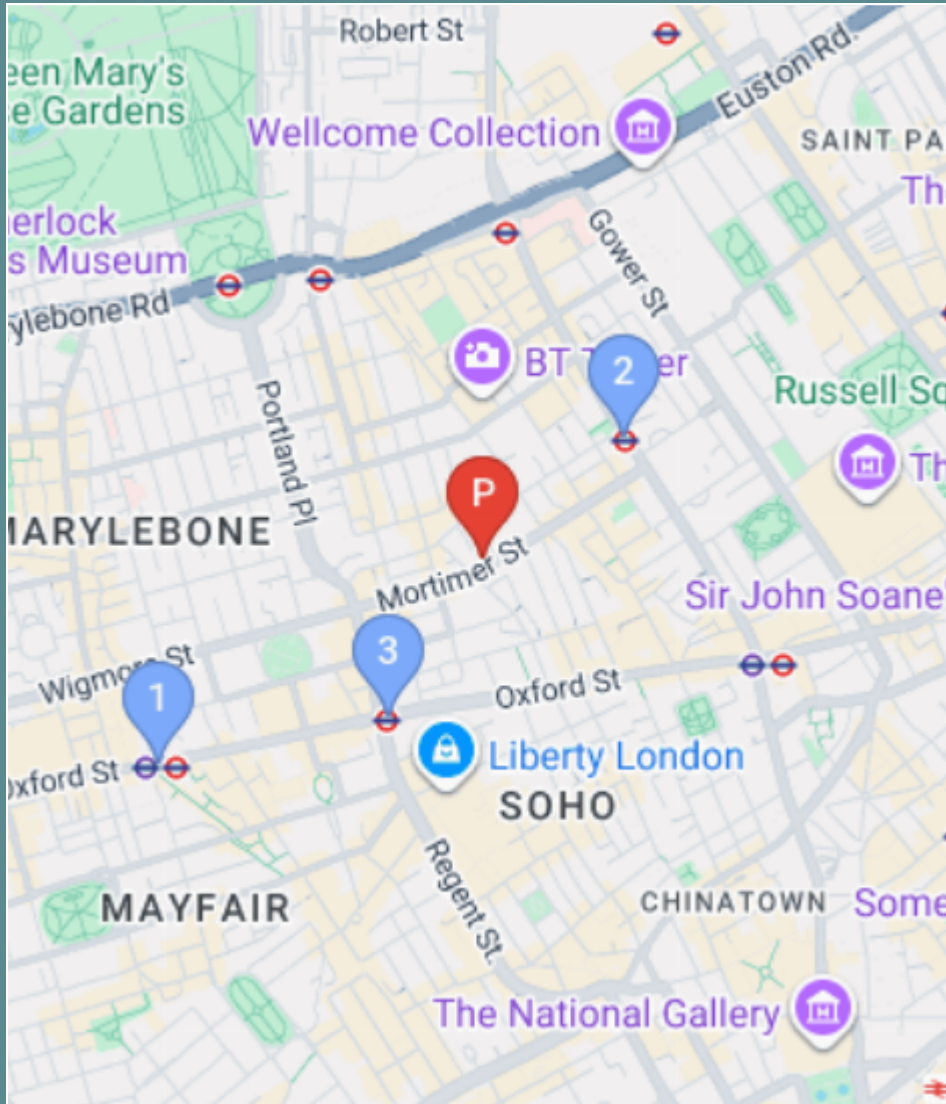
Fully Furnished

# Workspace Specification

Floor/Unit	Status	Size	Price	Term
3rd Floor	Available	1861	£33,200	24 months

# Connectivity

16 Mortimer Street is a 10,100 sq ft luxury boutique office building offered as a whole or in floors from 1,843 sq ft. It features Grade A+ fitted space, duplex options, a boutique reception with a barista-trained concierge, brand-new air conditionin...



 Godge Street – 7 mins walk



 Oxford Circus – 8 mins walk



 Bond Street – 13 mins walk



# Workspace Services

Included in your sub800 workspace



## Remote Concierge Service

Our remote concierge team is on hand to support you. From sourcing catering for important meeting, to planning wellness workshops, and everything in between...



## Food & Beverage Deliveries

Enjoy a tailored choice of food and beverages delivered to your office. Our selections are carefully curated by our team to offer your business delightful options.



## Internet & Technology

Select from a variety of internet bandwidth options, along with access to other technology products to upgrade your space



## Cleaning & Waste Services

Access to allocated cleaning slots, reporting and products to suit your team's needs. Our cleaning saves you time arranging cleaning or doing it yourself.



## Furniture & Fit-Out

Browse on the sub800 shop for our extensive range of furniture items, meeting room installations, have a bespoke consultation with our team.



## Health & Safety Onboarding

A comprehensive health and safety onboarding pack that details how you can ensure your workspace is safe, as well as a list of preferred suppliers and rates



## Repairs & Support

sub800 provide your business with light repairs and the option to source specialist works with preferred suppliers and rates



## Member's Club Access

Access to exclusive member's clubs for the C-Suite level of your team, giving them access to external meeting space, events and networking opportunities





[Make An Enquiry](#)

[Book A Viewing](#)

[enquiries@sub800.com](mailto:enquiries@sub800.com) | [0207 052 3025](tel:02070523025) | [www.sub800.com](http://www.sub800.com)