

# 1st Floor, 9 Hatton Street

Marylebone

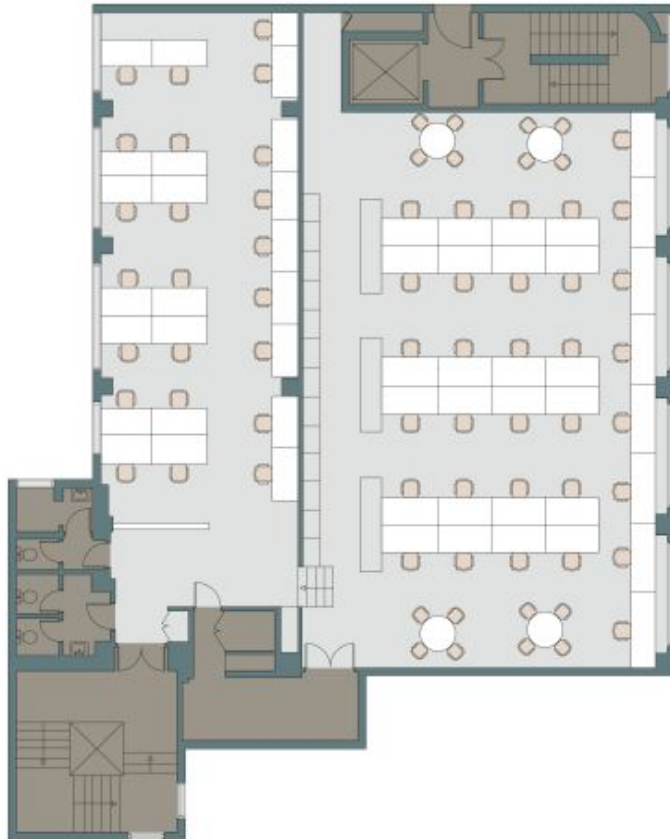
Sq Ft: 2553

Monthly Price: £21,050





# Floor Plan



# About This Workspace

Located in the creative hub of Marylebone, 9 Hatton Street offers a striking industrial-style workspace that blends character with contemporary design. Featuring exposed brickwork, high ceilings, and large windows that flood the space with natural light, this unique setting provides an inspiring environment for businesses looking to make an impact. With its open-plan layout and stylish, warehouse-style aesthetic, it's ideal for those seeking a dynamic and creative workspace. Just a short walk from Edgware Road and Marylebone stations, this well-connected location offers both convenience and charm in one of London's most vibrant

# Workspace Amenities



Air Conditioning



Excellent Natural Light



Lift



Meeting Rooms

# Workspace Specification

Floor/Unit	Status	Size	Price	Term
1st Floor	Available	2553	£21,050	24 months

# Connectivity

Located in the creative hub of Marylebone, 9 Hatton Street offers a striking industrial-style workspace that blends character with contemporary design. Featuring exposed brickwork, high ceilings, and large windows that flood the space with natural li...

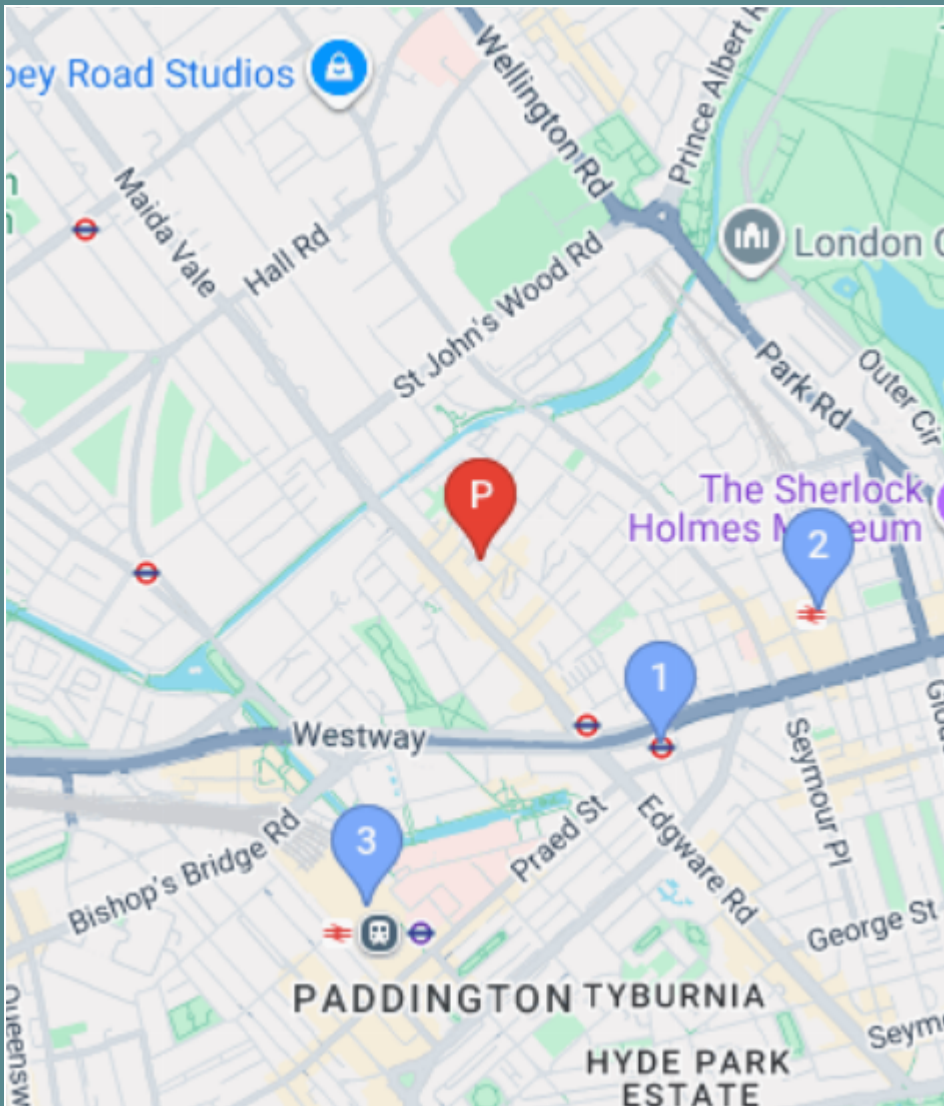
 Edgware Road – 9 mins walk



 Marylebone – 13 mins walk



 Paddington – 19 mins walk



# Workspace Services

Included in your sub800 workspace



## Remote Concierge Service

Our remote concierge team is on hand to support you. From sourcing catering for important meeting, to planning wellness workshops, and everything in between...



## Food & Beverage Deliveries

Enjoy a tailored choice of food and beverages delivered to your office. Our selections are carefully curated by our team to offer your business delightful options.



## Internet & Technology

Select from a variety of internet bandwidth options, along with access to other technology products to upgrade your space



## Cleaning & Waste Services

Access to allocated cleaning slots, reporting and products to suit your team's needs. Our cleaning saves you time arranging cleaning or doing it yourself.



## Furniture & Fit-Out

Browse on the sub800 shop for our extensive range of furniture items, meeting room installations, have a bespoke consultation with our team.



## Health & Safety Onboarding

A comprehensive health and safety onboarding pack that details how you can ensure your workspace is safe, as well as a list of preferred suppliers and rates



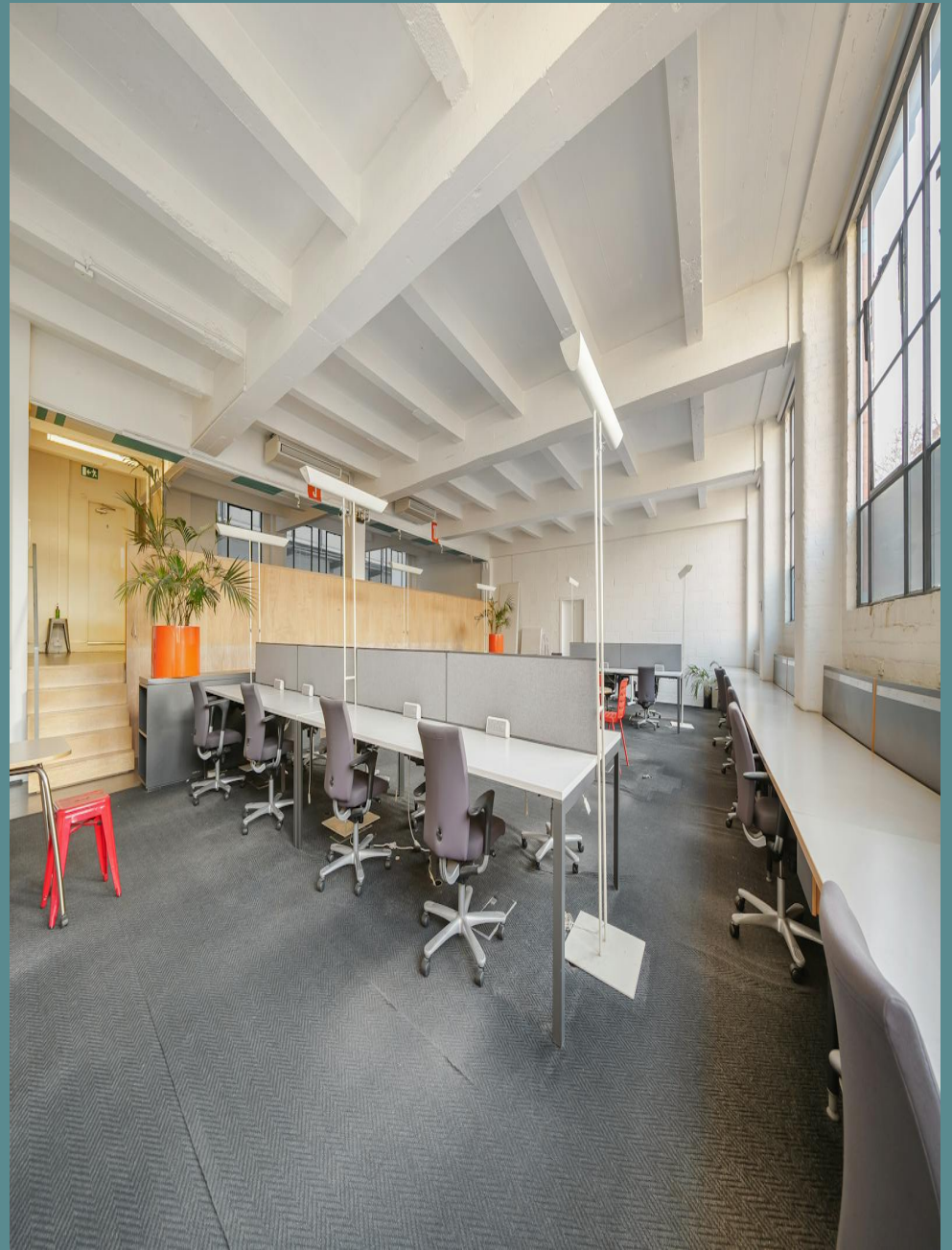
## Repairs & Support

sub800 provide your business with light repairs and the option to source specialist works with preferred suppliers and rates



## Member's Club Access

Access to exclusive member's clubs for the C-Suite level of your team, giving them access to external meeting space, events and networking opportunities





[Make An Enquiry](#)

[Book A Viewing](#)

[enquiries@sub800.com](mailto:enquiries@sub800.com) | [0207 052 3025](tel:02070523025) | [www.sub800.com](http://www.sub800.com)