

G Floor, 1st Floor, 365 Euston Road

Fitzrovia

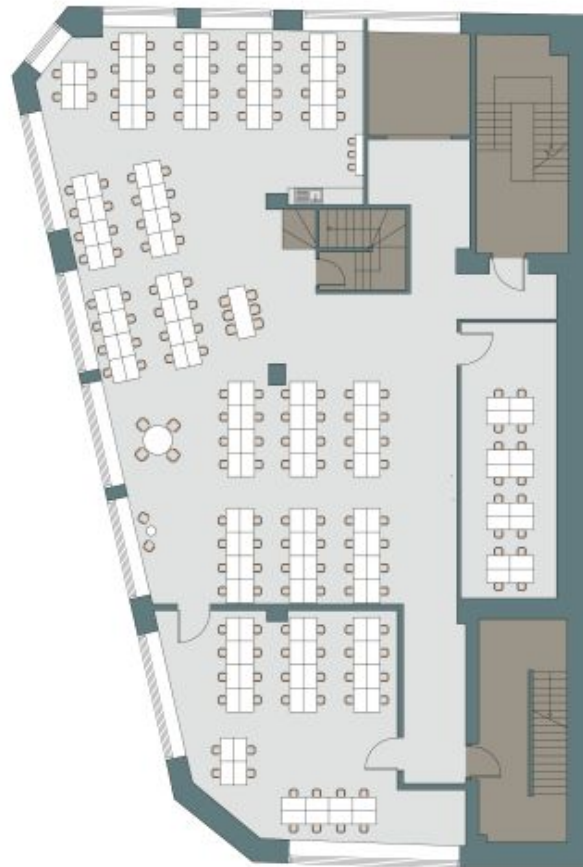
Sq Ft: 5100

Monthly Price: £41,700





Floor Plan



About This Workspace

Situated in the bustling heart of Euston, 365 Euston Road offers a contemporary and well-connected workspace designed for modern businesses. This recently refurbished building features sleek, high-quality finishes, excellent natural light, and a flexible layout to support productivity and collaboration. With Euston, Warren Street, and Great Portland Street stations just a short walk away, the location provides exceptional transport links alongside a vibrant mix of cafés, restaurants, and amenities. A prime address for businesses looking for both convenience and a dynamic working environment.

Workspace Amenities



Excellent Natural Light



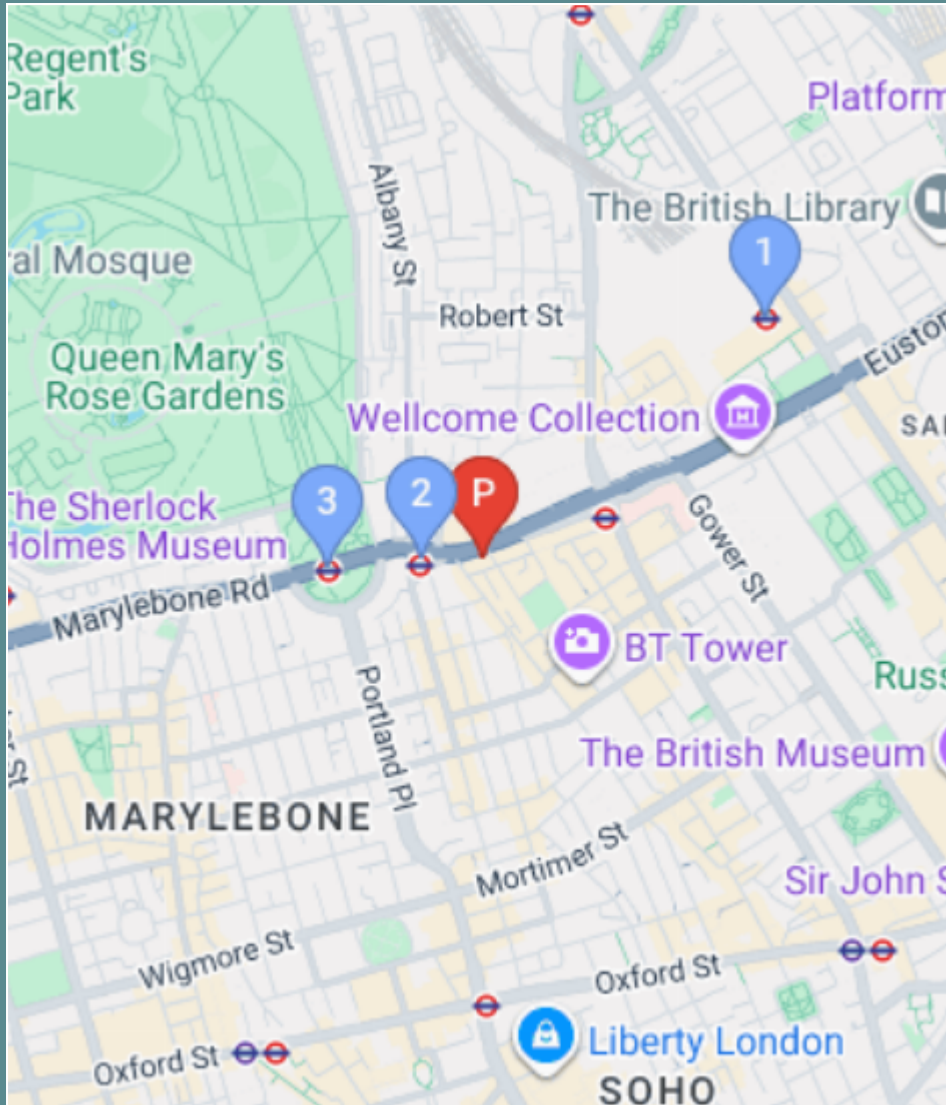
Meeting Rooms

Workspace Specification

Floor/Unit	Status	Size	Price	Term
G Floor, 1st Floor	Available	5100	£41,700	24 months

Connectivity

Situated in the bustling heart of Euston, 365 Euston Road offers a contemporary and well-connected workspace designed for modern businesses. This recently refurbished building features sleek, high-quality finishes, excellent natural light, and a flex...



 Great Portland Street – 2 mins walk



 Regent's Park – 6 mins walk



 Euston – 15 mins walk



Workspace Services

Included in your sub800 workspace



Remote Concierge Service

Our remote concierge team is on hand to support you. From sourcing catering for important meeting, to planning wellness workshops, and everything in between...



Food & Beverage Deliveries

Enjoy a tailored choice of food and beverages delivered to your office. Our selections are carefully curated by our team to offer your business delightful options.



Internet & Technology

Select from a variety of internet bandwidth options, along with access to other technology products to upgrade your space



Cleaning & Waste Services

Access to allocated cleaning slots, reporting and products to suit your team's needs. Our cleaning saves you time arranging cleaning or doing it yourself.



Furniture & Fit-Out

Browse on the sub800 shop for our extensive range of furniture items, meeting room installations, have a bespoke consultation with our team.



Health & Safety Onboarding

A comprehensive health and safety onboarding pack that details how you can ensure your workspace is safe, as well as a list of preferred suppliers and rates



Repairs & Support

sub800 provide your business with light repairs and the option to source specialist works with preferred suppliers and rates



Member's Club Access

Access to exclusive member's clubs for the C-Suite level of your team, giving them access to external meeting space, events and networking opportunities





[Make An Enquiry](#)

[Book A Viewing](#)

enquiries@sub800.com | [0207 052 3025](tel:02070523025) | www.sub800.com