

sub800

# LG Floor, G Floor, 1st Floor, 2nd Floor, 3rd Floor, 20-22 Mortimer Street

Fitzrovia

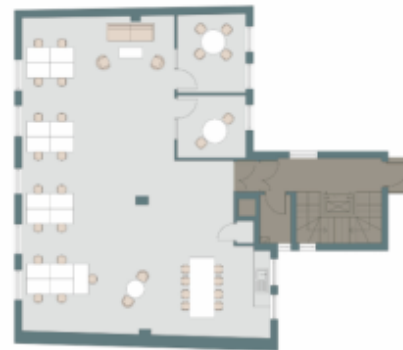
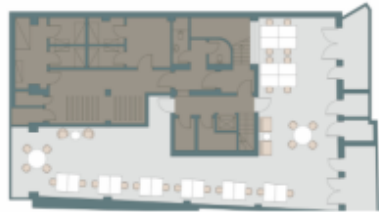
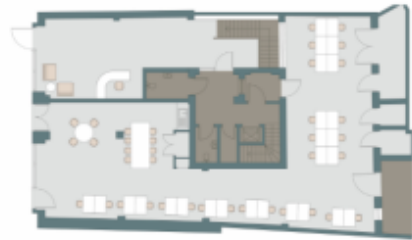
Sq Ft: 8728

Monthly Price: £111,050





# Floor Plan



# About This Workspace

The property occupies a prominent position and is set over lower ground to third floors. The property is due to undergo full refurbishment with many of the features displayed over page, providing you with a look and feel for the space. There is to be a communal roof terrace on the top floor. The opportunity is perfect for a company HQ with ground floor showroom/operations, or can be taken as individual office floors and separate ground floor retail.

# Workspace Amenities



Access Control



Air Conditioning



Excellent Natural Light



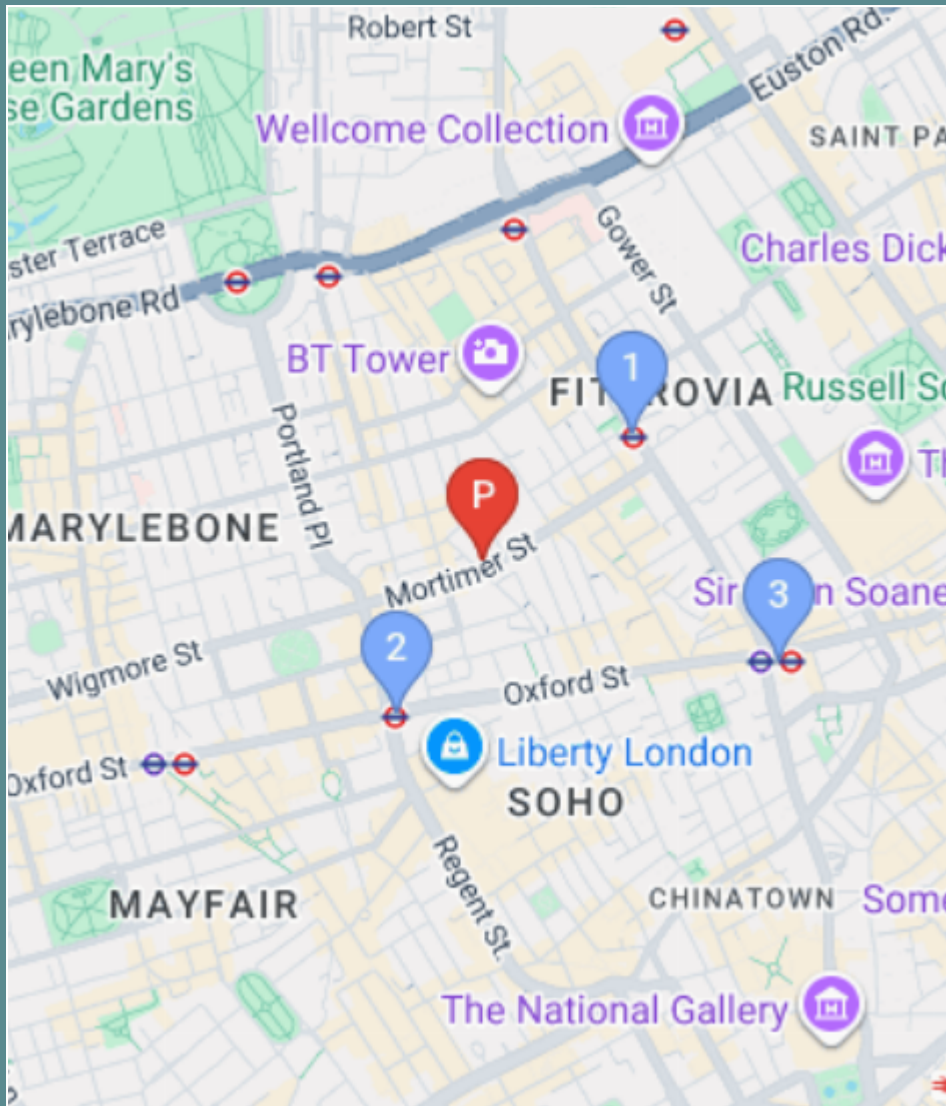
Lift

# Workspace Specification

Floor/Unit	Status	Size	Price	Term
LG Floor, G Floor, 1st Floor, 2nd Floor, 3rd Floor	Available	8728	£111,050	24 months

# Connectivity

The property occupies a prominent position and is set over lower ground to third floors. The property is due to undergo full refurbishment with many of the features displayed over page, providing you with a look and feel for the space. There is t...



 Goodge Street – 7 mins walk



 Oxford Circus – 7 mins walk



 Tottenham Court Road – 12 mins walk



# Workspace Services

Included in your sub800 workspace



## Remote Concierge Service

Our remote concierge team is on hand to support you. From sourcing catering for important meeting, to planning wellness workshops, and everything in between...



## Food & Beverage Deliveries

Enjoy a tailored choice of food and beverages delivered to your office. Our selections are carefully curated by our team to offer your business delightful options.



## Internet & Technology

Select from a variety of internet bandwidth options, along with access to other technology products to upgrade your space



## Cleaning & Waste Services

Access to allocated cleaning slots, reporting and products to suit your team's needs. Our cleaning saves you time arranging cleaning or doing it yourself.



## Furniture & Fit-Out

Browse on the sub800 shop for our extensive range of furniture items, meeting room installations, have a bespoke consultation with our team.



## Health & Safety Onboarding

A comprehensive health and safety onboarding pack that details how you can ensure your workspace is safe, as well as a list of preferred suppliers and rates



## Repairs & Support

sub800 provide your business with light repairs and the option to source specialist works with preferred suppliers and rates



## Member's Club Access

Access to exclusive member's clubs for the C-Suite level of your team, giving them access to external meeting space, events and networking opportunities





[Make An Enquiry](#)

[Book A Viewing](#)

[enquiries@sub800.com](mailto:enquiries@sub800.com) | [0207 052 3025](tel:02070523025) | [www.sub800.com](http://www.sub800.com)