

1st Floor, 33 Eastcheap

City of London

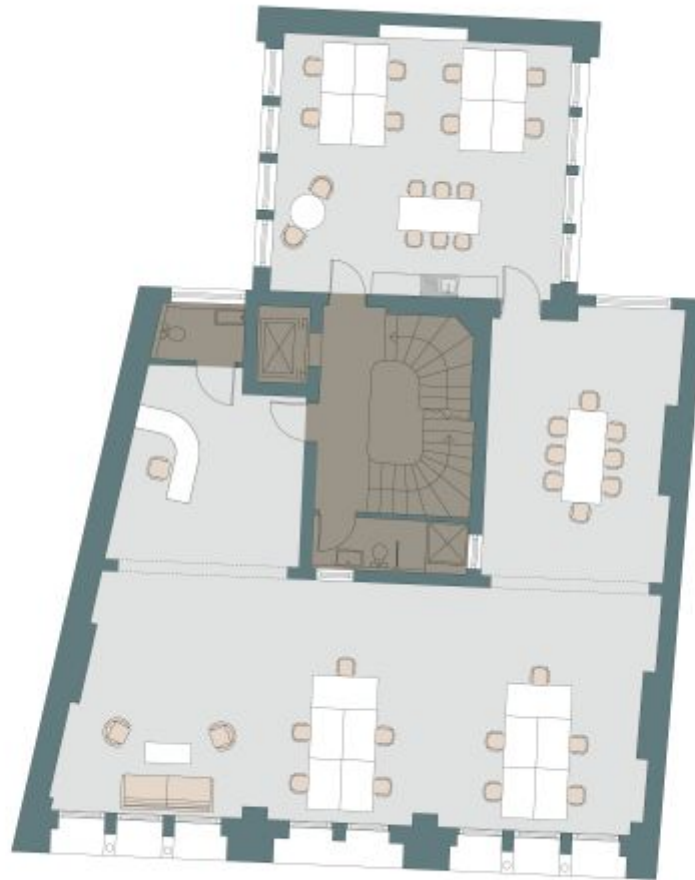
Sq Ft: 1135

Monthly Price: £14,400





Floor Plan



About This Workspace

Position your business in the heart of the City at 33 Eastcheap, a striking Grade II listed building blending historic character with contemporary functionality. This fully fitted first-floor office offers excellent natural light, space for up to 18 desks, a meeting room and kitchenette. Surrounded by vibrant amenities and within walking distance of Bank, Monument and Liverpool Street, it provides exceptional connectivity in a prime commercial location.

Workspace Amenities



Excellent Natural Light



Meeting Rooms



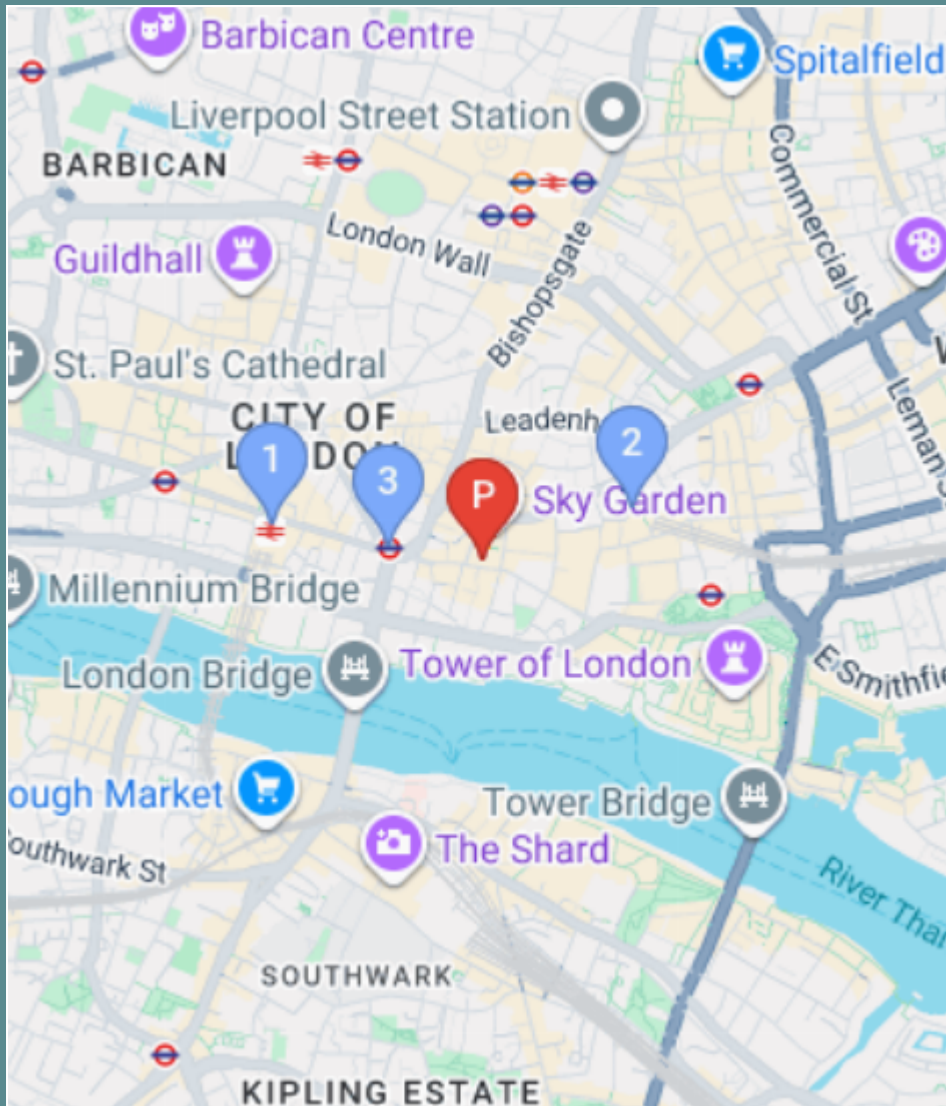
Fully Furnished

Workspace Specification

Floor/Unit	Status	Size	Price	Term
1st Floor	Available	1135	£14,400	24 months

Connectivity

Position your business in the heart of the City at 33 Eastcheap, a striking Grade II listed building blending historic character with contemporary functionality. This fully fitted first-floor office offers excellent natural light, space for up to 18...



 Monument – 4 mins walk



 Fenchurch Street – 6 mins walk

 Cannon Street – 8 mins walk



Workspace Services

Included in your sub800 workspace



Remote Concierge Service

Our remote concierge team is on hand to support you. From sourcing catering for important meeting, to planning wellness workshops, and everything in between...



Food & Beverage Deliveries

Enjoy a tailored choice of food and beverages delivered to your office. Our selections are carefully curated by our team to offer your business delightful options.



Internet & Technology

Select from a variety of internet bandwidth options, along with access to other technology products to upgrade your space



Cleaning & Waste Services

Access to allocated cleaning slots, reporting and products to suit your team's needs. Our cleaning saves you time arranging cleaning or doing it yourself.



Furniture & Fit-Out

Browse on the sub800 shop for our extensive range of furniture items, meeting room installations, have a bespoke consultation with our team.



Health & Safety Onboarding

A comprehensive health and safety onboarding pack that details how you can ensure your workspace is safe, as well as a list of preferred suppliers and rates



Repairs & Support

sub800 provide your business with light repairs and the option to source specialist works with preferred suppliers and rates



Member's Club Access

Access to exclusive member's clubs for the C-Suite level of your team, giving them access to external meeting space, events and networking opportunities





[Make An Enquiry](#)

[Book A Viewing](#)

enquiries@sub800.com | [0207 052 3025](tel:02070523025) | www.sub800.com