

5th Floor, 10 Dean Farrar Street

Victoria

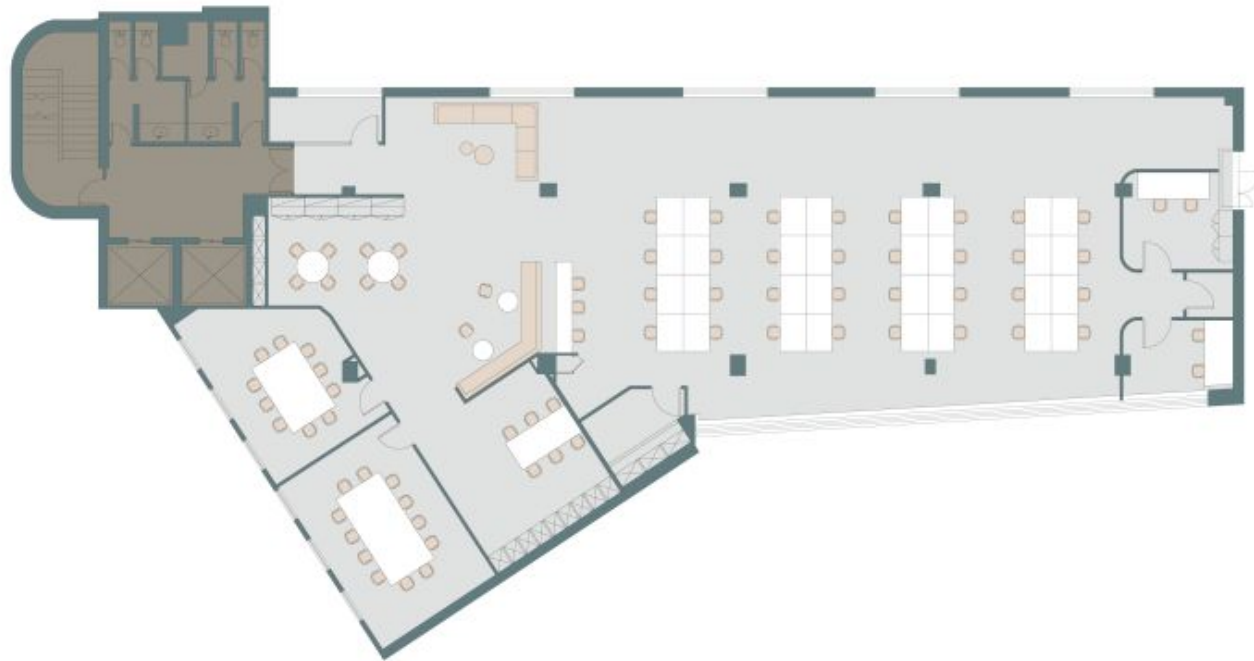
Sq Ft: 3487

Monthly Price: £42,100





Floor Plan



About This Workspace

10 Dean Farrar Street is a beautifully contemporary workspace in the heart of Victoria and Westminster. With plenty of natural light, generous breakout areas, and a striking modern design, the space is both functional and inspiring. An impressive reception area adds a polished first impression, making it a perfect setting for ambitious teams wanting to thrive in a central and connected London location.

Workspace Amenities



Cycle Storage



Excellent Natural Light



Meeting Rooms



Shower



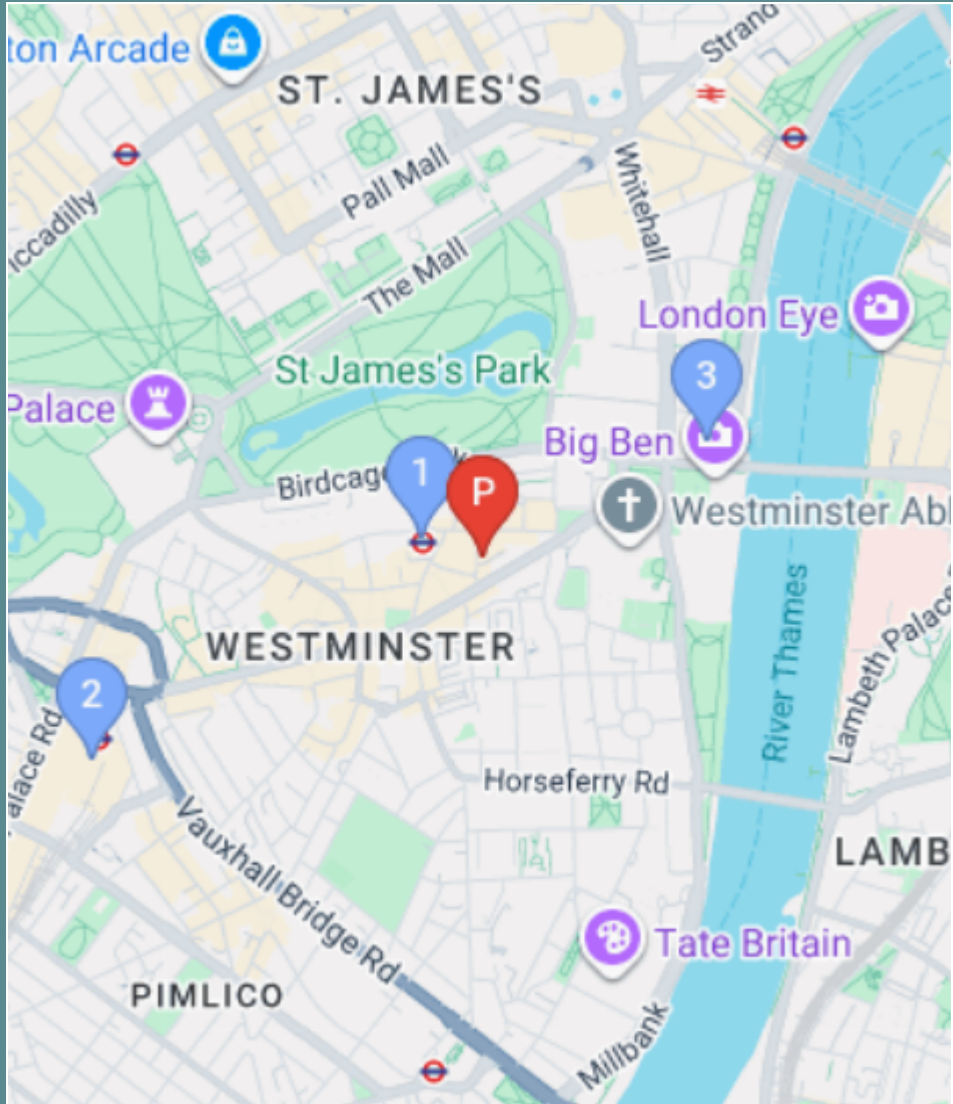
Manned Reception

Workspace Specification

Floor/Unit	Status	Size	Price	Term
5th Floor	Available	3487	£42,100	24 months

Connectivity

10 Dean Farrar Street is a beautifully contemporary workspace in the heart of Victoria and Westminster. With plenty of natural light, generous breakout areas, and a striking modern design, the space is both functional and inspiring. An impressive rec...



 St James's Park – 3 mins walk



 Westminster – 12 mins walk



 Victoria – 15 mins walk



Workspace Services

Included in your sub800 workspace



Remote Concierge Service

Our remote concierge team is on hand to support you. From sourcing catering for important meeting, to planning wellness workshops, and everything in between...



Food & Beverage Deliveries

Enjoy a tailored choice of food and beverages delivered to your office. Our selections are carefully curated by our team to offer your business delightful options.



Internet & Technology

Select from a variety of internet bandwidth options, along with access to other technology products to upgrade your space



Cleaning & Waste Services

Access to allocated cleaning slots, reporting and products to suit your team's needs. Our cleaning saves you time arranging cleaning or doing it yourself.



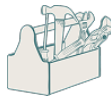
Furniture & Fit-Out

Browse on the sub800 shop for our extensive range of furniture items, meeting room installations, have a bespoke consultation with our team.



Health & Safety Onboarding

A comprehensive health and safety onboarding pack that details how you can ensure your workspace is safe, as well as a list of preferred suppliers and rates



Repairs & Support

sub800 provide your business with light repairs and the option to source specialist works with preferred suppliers and rates



Member's Club Access

Access to exclusive member's clubs for the C-Suite level of your team, giving them access to external meeting space, events and networking opportunities





[Make An Enquiry](#)

[Book A Viewing](#)

enquiries@sub800.com | [0207 052 3025](tel:02070523025) | www.sub800.com